



ALL ABOARD

VENUE WELCOME GUIDE



RALEIGH'S HISTORIC INDUSTRIAL EVENT VENUE

UNIONHALLRALEIGH.COM | 510 W MARTIN ST. RALEIGH, NC | P: 984.202.3985



OUR HISTORY

Union Hall is located in Raleigh's historic Depot District, right where the city's original train depot operated from the 1830s to the 1940s. Inside, you can still spot the industrial beams — a cool throwback to its railroad roots.

After its days as a busy depot, the building became a repair hub for trains. But from the 1980s until 2011, it sat empty — until the City of Raleigh stepped in, bringing it back to life with plans to host events and welcome travelers back on board.

Union Hall





A UNIQUELY
CURATED
SPACE
DESIGNED TO
CELEBRATE



OUR FLOOR PLANS

SPACE TO CHOOSE



THE GRAND HALL

Our Grand Hall can accommodate over 700 guests for a mixed-seating style event, and 400 guests for a plated meal.

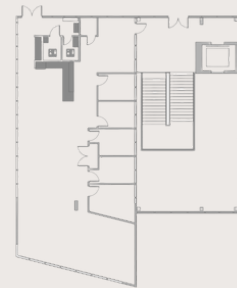
Our industrial modern space can be designed easily for straightforward events or adapted for a plethora of designs.

Union Hall boasts 40' tall ceilings, a window wall, and industrial designs.



THE TERRACE

Our terrace has stunning downtown Raleigh views, seasonal flowers, and plenty of power—perfect for photos, cocktails, or evening drinks. With cozy lighting, it's great for anything from dance parties to a relaxed cigar and bourbon bar.



THE OVERLOOK

The Overlook is our newest addition, featuring stunning, unobstructed views of downtown Raleigh. Ideal for intimate gatherings, sunset moments, or morning mimosas, it also doubles as a peaceful, beautifully lit getting-ready space for couples to prepare for their big day.

INVESTMENT

FEATURED AMMENITIES:

12 HOURS OF VENUE ACCESS

TRAFFIC CONTROL

ON SITE CLEANING STAFF

VERSATILE COCKTAIL/RECEPTION SPACES

ADA ACCESSIBILITY

WEEKDAY PRICING

\$5,500

For Events on Monday–Thursday

WEEKEND PRICING

\$7,500

For Events on Friday

\$8,500

For Events on Saturday

\$7,000

For Events on Sunday

Pricing does not include the City of Raleigh's Required \$1,000 Refundable Damage Deposit.



ADDITIONAL CONSIDERATIONS

A'LA CARTE FEES

Additional Hours exceeding the traditional twelve (12) hours including in your rental are billed at \$250 per hour.

Observation Patio is available for an additional flat fee of \$250.

High Guest Counts (over 300) can incur additional fees due to additional cleaning and staffing requirements.

Holiday Related Dates are subject to a \$1,500 additional fee.

REQUIREMENTS

Event Insurance. The City of Raleigh requires all events to carry event insurance.

Planning Services. We do require all events to secure a planning service for their event held here at Union Hall.

Rocky Top is our exclusive caterer. This means that when it comes to catering, you would be required to use Rocky Top for any meals provided on site. *For bar – you may choose between On My Way or Rocky Top.*





AVAILABLE INVENTORY

THESE ITEMS ARE INCLUDED FOR USE
DURING YOUR RENTAL AT UNION HALL

200

WHITE PADDED CHAIRS

20

60" ROUND TABLES

200

BLACK WOODEN CHAIRS

10

6 FT BANQUET TABLES

2

48" ROUND TABLES

5

8 FT BANQUET TABLES

5

SQUARE COCKTAIL TABLES

5

ROUND COCKTAIL TABLES

*THESE ARE ADJUSTABLE TO 30" OR 42"

8FT/10FT BLACK PIPE AND DRAPE

AVAILABLE INVENTORY

GRAND HALL RENTALS

200
WHITE PADDED CHAIRS

200
BLACK WOODEN CHAIRS

2
48" ROUND TABLES

5
SQUARE COCKTAIL TABLES

20
60" ROUND TABLES

10
6 FT BANQUET TABLES

5
8 FT BANQUET TABLES

5
ROUND COCKTAIL TABLES
**THESE ARE ADJUSTABLE TO 30" OR 42"*

OVERLOOK/TERRACE

50
WHITE PADDED CHAIRS

3
ROUND COCKTAIL TABLES

2
6 FT BANQUET TABLES

5
60" ROUND TABLES

VENDORS

THESE VENDORS ARE REQUIRED FOR ANY EVENT HOSTED HERE AT RALEIGH UNION HALL.

PLANNING

ATTENDED EVENTS
SOMETHING FABULOUS
JANE ROSE EVENTS
THE GATHERING CO.
PREMIER PARTY PLANNERS
ELIZABETH FLAKE EVENTS

AV

ATTENDED EVENTS
STYLUS EVENTS
HARLEM EVENTS
RANG EVENTS
AMERICAN AV

Catering

ROCKY TOP

Bar Service

ROCKY TOP
ON MY WAY

Rentals

CURATED EVENTS
PARTY REFLECTIONS

We've curated these vendors based on their professionalism and inclusivity for events from all walks of life. We choose to work with vendors who have experience in multicultural, LGBTQIA+, and other diverse scenarios. All vendors are open to collaboration and celebration for every event vision.

